

Nautilus Two - The Ship

The Nautilus Two, 43 m in length, is much more than just another safari boat. Built entirely out of wood according to Maldivian time-tested methods, this ship isn't just visually appealing. Lots of room, beautiful construction, and the most modern equipment prove that one mustn't forget luxury on an adventure ship. In 12 spacious, luxurious guest cabins, 24 people can be housed in accommodations that are more than comfortable.



Technical Details

Construction Year: 2008

Length: 141 ft.

Width: 42 ft.

Cruising Speed: 12 knots

Nautical Equipment: GPS, Sonar, Radio, GSM

Water Supply: 2 on board desalination plants

Power: 230V / 50Hz supplied by 2 diesel generators

Dinghy: 15 HP Outboarder

Extra Diving boat (Dhoni): 65 ft. dive dhoni with air compressor, fully equipped for scuba diving

Language spoken on Board:

English

Features:

Jacuzzi

Recliners

Onboard bar

Emergency Equipment:

First aid box, medical oxygen, fire extinguishers, life vests, smoke detectors, life rafts

Additional Information:

24/7 loading station for cameras, lamps etc. on main deck.

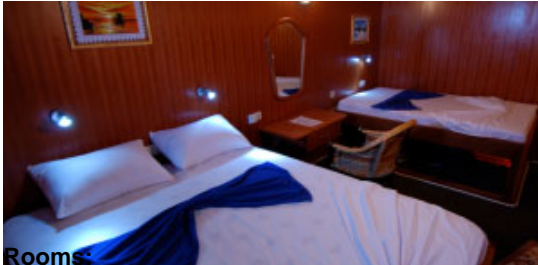
Power sockets in all rooms

Max. capacity - Guests: 24, Crew: 9

The local Tour Operator for Nautilus Two is: Nautico Maldives Pvt. Ltd., G.Ranauraa Villa, 20121 Male, Maldives

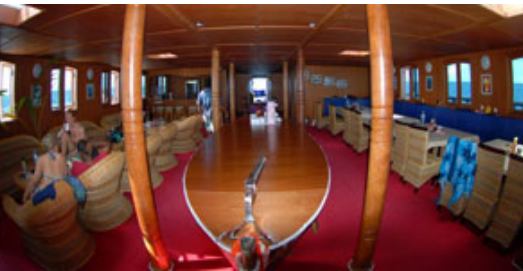
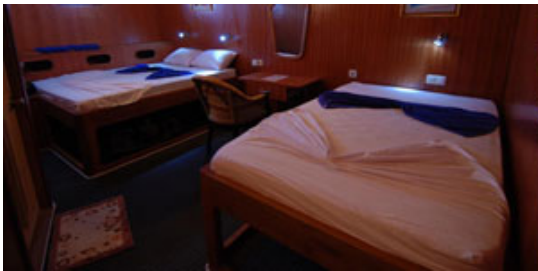
Nautilus Two - Rooms

The cabins on the Nautilus Two are larger than those of any other safari boat in the Maldives Islands. In each average-sized 25 m² cabin, there is a double bed measuring 2 x 2 m, a single bed measuring 2 x 1.5 m, a desk with drawers and chair, a mirror and a large dresser. The cabins in the Nautilus Two are not just spacious, they've also got lots of storage space. In each private bath (about 6 m²), there is a vanity with mirror, shower with massage jets and a toilet.



Rooms:

Number of Rooms: 12
Air Conditioning: Yes
Exterior Windows: Yes
En-Suite: Yes
Hot Water Shower: Yes
Power supply: Yes
Room Service: Yes
Towel Service: Yes

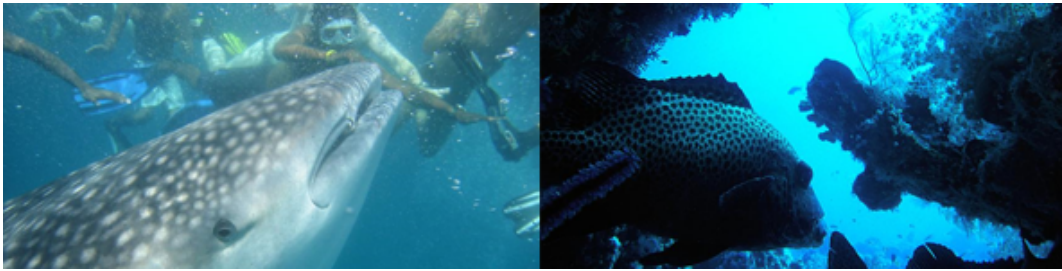


Additional Information:

220 volts / 24h are available in all rooms
European Adapters

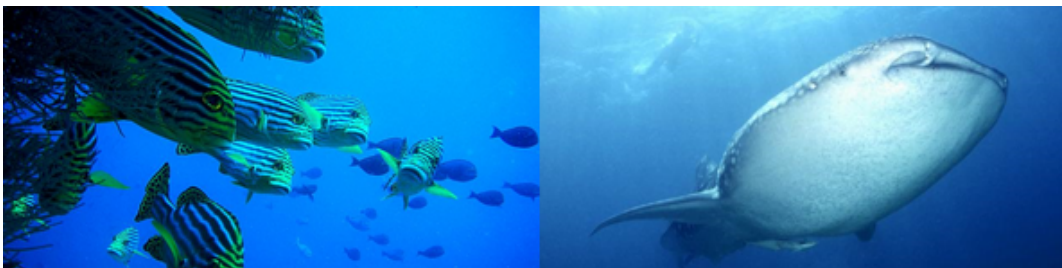
Nautilus Two - Diving

Dives are run from our diving dhoni and accompanied by two professional diving guides. On board the Nautilus Two, NITROX is available at a surcharge. Discover the beautiful underwater world of the Maldives on a dive off the Nautilus Two. Every dive is a new adventure! No diving destination offers more large fish, more schools of fish, more colourful reef fish, a wider variety of underwater landscapes or better diving services. The average water temperature is 28 °C throughout the year and visibility can be as much as 50 meters. Let our experienced crew bring you to the best diving spots and dive into the world of the coral reef; home to many colourful reef fish, turtles, schools of pelagic species, sharks, manta rays, whale sharks and many other interesting life forms. Enjoy the highest level of comfort and safety on our professionally-led dives. Diving requirement: minimum 30 ocean dives logged.



Diving:

Guided Dives: Yes
PADI Instructor: Yes
PADI Courses: Yes
Dives per Day: 2-3
Enos System: Yes
Dive Dhoni: Yes
Equipment Rental: Yes



Important Information for diving guests:

- Please remember to bring your logbook and diving certificate.
- A medical diving fitness check is recommended, but not compulsory.
- The first dive is always a so-called check-dive, which is compulsory for all divers.
- Dives are guided by an experienced PADI instructor and a dive master.
- Experienced divers can dive independently after the check dive.
- PADI courses can be held (please pre-book)
- Diving equipment is kept on the accompanying dive vessel (Dhoni)
- Oxygen, a DAN emergency case and a mobile phone are available on the Dhoni in case of emergency.
- Compressors are stored on the Dhoni, meaning that there is no noise pollution for guests on the liveaboard while bottles are re-filled between dives.
- All divers must adhere to the Maldivian diving regulations: no decompression dives, always stay with your dive buddy, never dive deeper than 30m if you are a PADI Advanced Open Water Diver (or equivalent) and never dive deeper than 18m if you are a PADI Open Water Diver (or equivalent).
- The last dive will be offered 24hrs before the end of the cruise.
-

The use of a diving computer is compulsory.

- English is the official language on board.
- A 21-day DAN diving insurance policy can be obtained on board for USD \$10 per person.
- During a 7-night cruise there are 17 dives, during a 14-night cruise there are 35 dives

Route:

It is our aim to show you the most beautiful dive spots in the Maldives. In order to do this, it is necessary to adapt our routes according to the season, available time and current weather reports. That is why our ships do not follow fixed routes, but rather tailor each safari route to make the best possible dive trip. Please trust our experienced crews to choose the right route; every ship's crew has years of experience in diving in the Maldives and they know how to make the most out of each cruise. At the start of each safari, a rough route will be confirmed, followed by daily briefings on what specific dive sites will be visited. Before each dive, you will be thoroughly briefed and shown a map of the dive site.

Required dive certification:

The minimum requirement is a PADI Open Water Diver certificate or equivalent, which will allow you to dive to a maximum of 18m. This is the depth when a lot of the best dive sites begin to be really interesting, which is why we encourage our guests to obtain a PADI Advanced Open Water Diver certificate or equivalent before or during the cruise. This will allow you to dive to a maximum of 30m and fully explore the Maldives' best dive spots.

Divers who have not dived for a while can do a PADI Scuba Review course to refresh their skills.

The initial check dive does not only serve as an opportunity to check your gear, but also for the dive guides to assess everybody's abilities. Should the dive guide or a guest feel that extra support is needed, special guided dives can be arranged at an extra cost (usually around USD 10 per dive).

Nautilus Two - Service

Our HiFi stereo system with CD player will provide for your musical entertainment. This is also a TV/VCR system at your disposal so you can watch your newly taped film footage along with a rechargeable battery station available around the clock. Traditionally, the helmstand is also found in our parlour. Watch as our captain steers the Nautilus Two to our next destination.



Service:

TV / DVD / HiFi in Salon: Yes

Fishing Gear: Yes

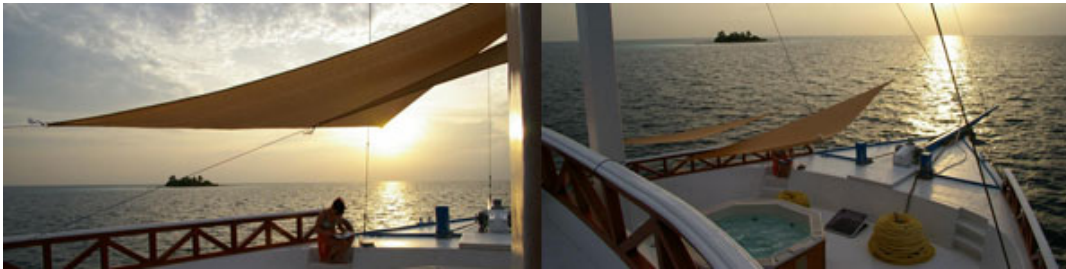
Island Visits: Yes

Beach Barbeque: Yes

Male Visit: Yes

Internet: Yes

Onboard payment options:



check in time: about 09:00 am - meeting point is Male airport exit of arrival hall.

check out time: latest 09:00 am AM - transfer back to Male airport

In case your International flight arrives later on cruise start day, please contact us for individual transfer arrangements.

WiFi Internet available FOC on board

Nautilus Two - Food

A 5m-long traditional Maldivian dinghy occupies the centre of the large, comfortable lounge of Nautilus Two and acts as a buffet table on which breakfast, lunch and dinner is served. The choice of local and international dishes is great, meaning that guests can choose dishes to suit their taste. The salon also boasts a cosy bar with a lounge area – the ideal spot to enjoy the tasty concoctions of the experienced bartender and chat with other guests.

Food:

Full Board



Additional information:

The Nautilus Coffee Shop offers freshly squeezed fruit juices, milkshakes and sandwiches between meals.

Beer: chilled beer on draught and a wide range of spirits, red and white wines and soft drinks is available. Bar and coffee shop items are charged extra.

Hot tea and coffee are available around the clock and free of charge.

Maldives Scuba Diving, Pvt. Ltd

Re. C-204/2003

Lux Lodge, Orchid Magu,

Male, Republic of Maldives

Phone:

AUSTRIA: +43 3385 21522

USA: +1 315 805 5535

GERMANY: +49 30 8939 1967

UK: +44 20 3239 1586

Fax: +44 203 004 1592

All international phone numbers route your call to our office in Austria.

We are happy to answer your questions!

We speak English and German.



Barbara



Gundi



Nautilus Two Liveboard

www.maldivesdivetravel.com/viewshipdetail/Nautilus_Two

Available Cruises

Available cruise dates and prices as per day of printing this brochure: March 20, 2018, 11:28 pm

Date	Nights	Free beds	Rate p.n.	Total p.p.
------	--------	-----------	-----------	------------

Please note, cruise dates and prices are subject to change withouth further notice.